

Hook-Type Latches

Housing Stainless Steel, with Plastic Operating Elements, Not Lockable

SPECIFICATION

Types

- Type **RG**: With knurled knob GN 7336
- Type **KG**: With wing knob
- Type **HG**: With lever

Version of the hook

- **H1**: Pivoting radius $R=28$

Identification no.

- No. **1**: Without latch bracket
- No. **2**: With latch bracket

Lock housing

Stainless steel AISI 303 **N**

Operating element

Plastic, Polyamide (PA)
Black, matte finish

Other parts

Stainless steel AISI 304

Cover cap

Plastic
Light gray, matte finish

Protection class IP 65

INFORMATION

Hook-type latches GN 115.8-WOE-NL-SST-P with hook and catch are mainly used for sliding doors and flaps. The locking action is in radial direction to the axis of rotation, resulting in a wide variety of different uses.

The hook-type latches GN 115.8-WOE-NL-SST-P are supplied with loosely enclosed hook.

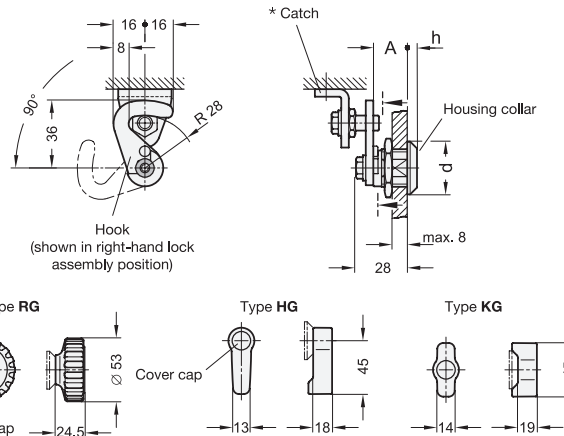


ON REQUEST

- Hook-type latches with other hook distance A
- Hook with other pivoting radius R

TECHNICAL INFORMATION

- Construction and assembly instructions (see page)
- Overview Latch Types (see page 1456)
- IP Protection Classes (see page A23)
- Plastic Characteristics (see page A2)
- Stainless Steel Characteristics (see page A26)



GN 115.8-WOE-NL-SST-P-RG

STAINLESS STEEL

Description	Hook distance A	d	h	⚖
GN 115.8-RG-18-H1-N-1	18	28	4	160
GN 115.8-RG-18-H1-N-2	18	28	4	206

GN 115.8-WOE-NL-SST-P-KG

STAINLESS STEEL

Description	Hook distance A	d	h	⚖
GN 115.8-KG-18-H1-N-1	18	28	4	42
GN 115.8-KG-18-H1-N-2	18	28	4	87

GN 115.8-WOE-NL-SST-P-HG

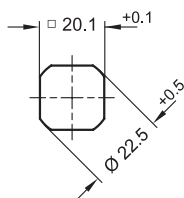
STAINLESS STEEL

Description	Hook distance A	d	h	⚖
GN 115.8-HG-18-H1-N-1	18	28	4	29
GN 115.8-HG-18-H1-N-2	18	28	4	75

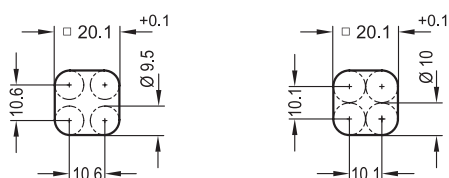
* Dimensions of the latch bracket

* Dimensions of the latch bracket

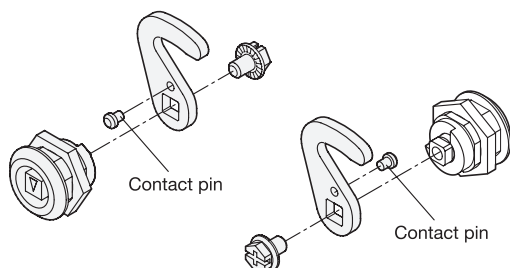
Installation hole for punching or laser machining



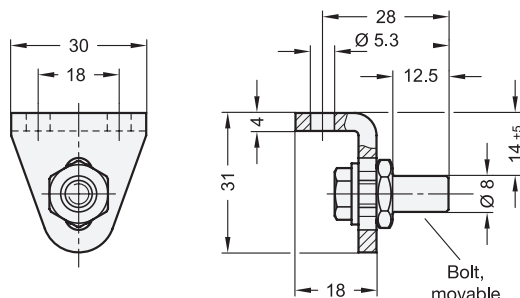
Installation hole for drilling or milling



Assembly latch and hook



Dimensions of the latch bracket



Construction and assembly instructions

For installation, set a hole in the door, cover or hatch as shown in the outline drawing.

The required installation bore in the door leaf, is usually generated by punching or laser machining in series production.

The installation bore diameter can also be created by drilling or milling as shown in the outline drawings.

For small series and steel sheets below 2 mm thickness, the sheet metal punch GN 123 (see page 1493) are the tool of choice.

The hook can only be attached to the latch after installing the lock housing in the door leaf.

The bolt of the latch bracket can be shifted vertically within a slot by ± 5 mm, making it easier to adjust the latch during installation.

Ideally, the bolt should be in the plane of the rotational axis when locked, as shown. A sideways offset of as much as 4 mm does not impair the proper function.

The angle of rotation of the hook is normally limited to 90°.

Depending on the mounting of the contact pin supplied loose, the locking action is effected by turning left or right.

Without the contact pin, the hook can be rotated by 360° .